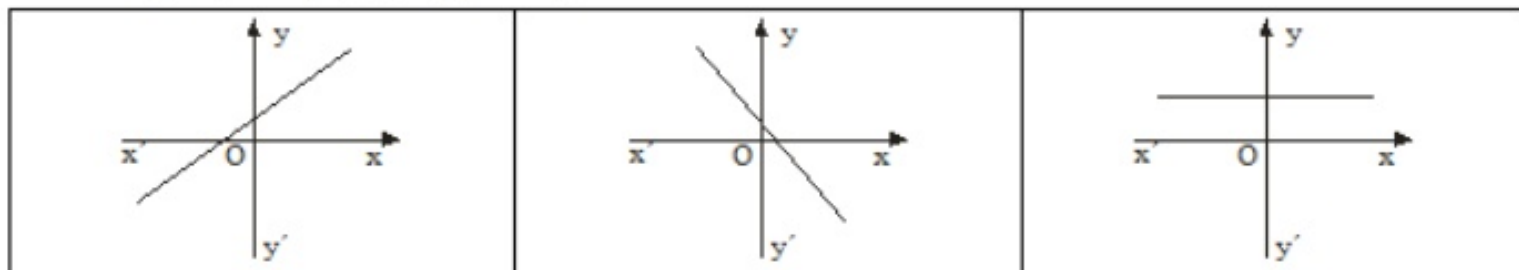


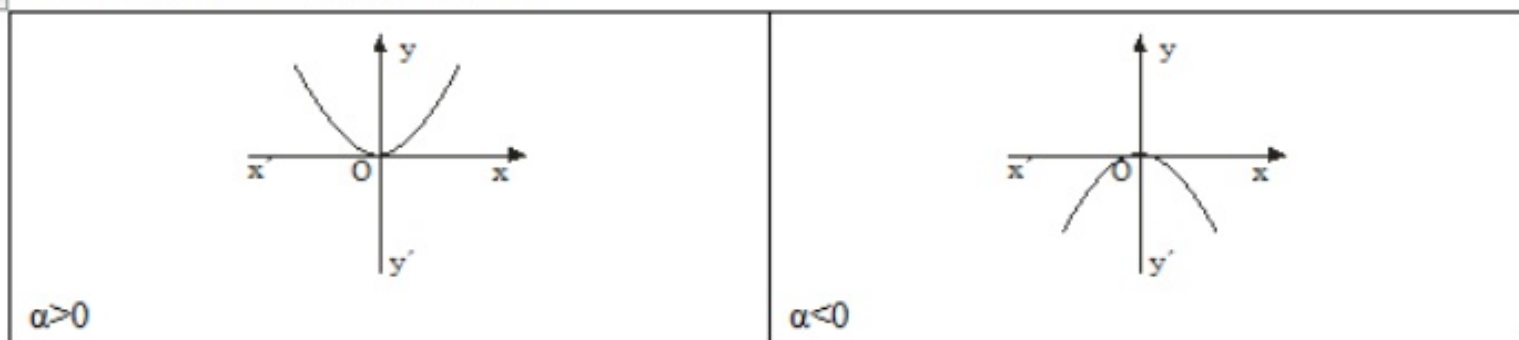
ΓΡΑΦΙΚΕΣ ΠΑΡΑΣΤΑΣΕΙΣ ΒΑΣΙΚΩΝ ΣΥΝΑΡΤΗΣΕΩΝ

ΔΙΔΑΣΚΟΥΣΑ: ΔΗΜΗΤΡΑ ΚΟΥΛΟΥΜΠΟΥ

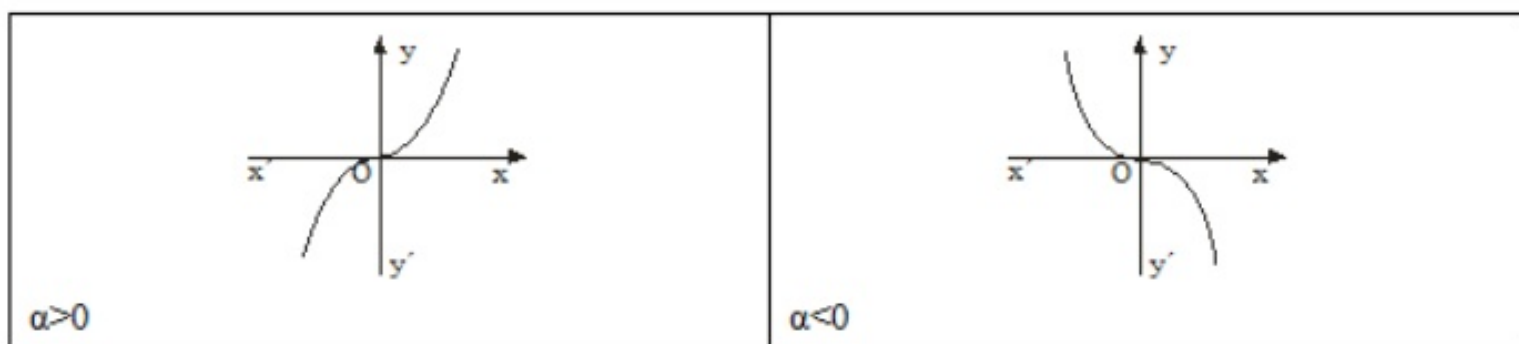
➤ Πολυωνυμική συνάρτηση $f(x)=ax+\beta$



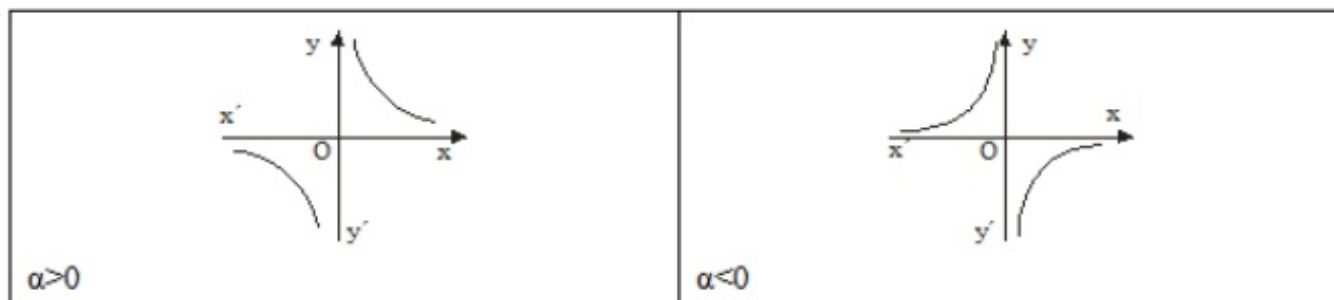
➤ Πολυωνυμική συνάρτηση $f(x)=ax^2$



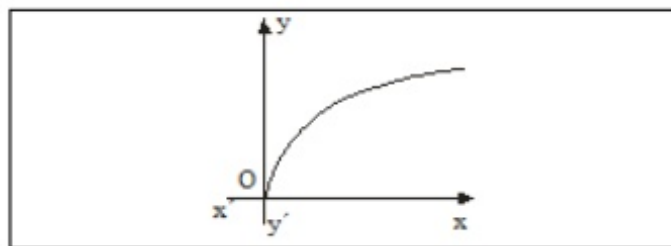
➤ Πολυωνυμική συνάρτηση $f(x)=ax^3$



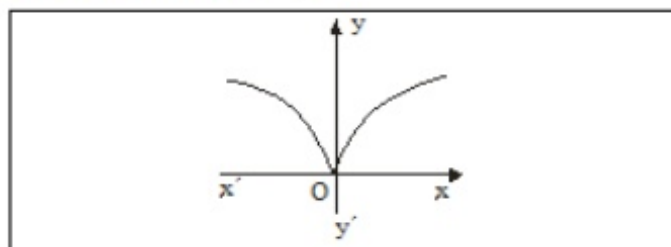
➤ Ρητή συνάρτηση $f(x) = \frac{\alpha}{x}$



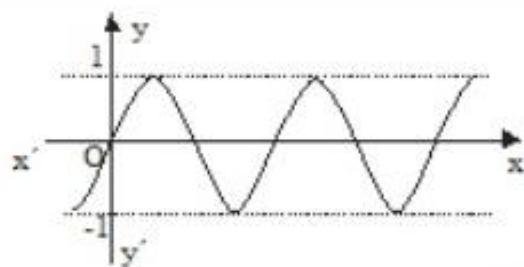
➤ Η συνάρτηση $f(x) = \sqrt{x}$



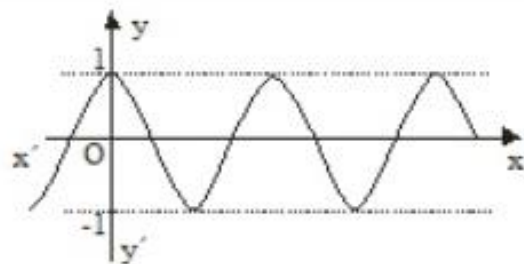
➤ Η συνάρτηση $f(x) = \sqrt{|x|}$



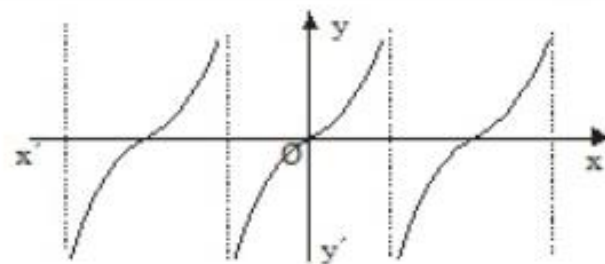
☛ Τριγωνομετρικές συναρτήσεις



$$f(x) = \eta\mu x$$

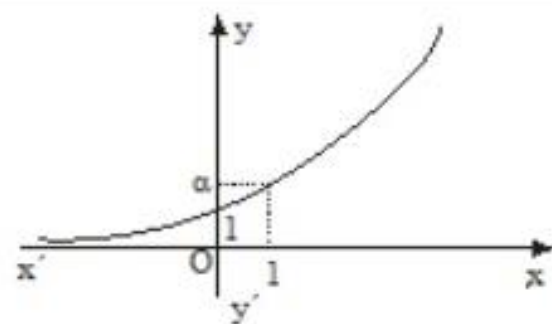


$$f(x) = \sigma\upsilon\nu x$$

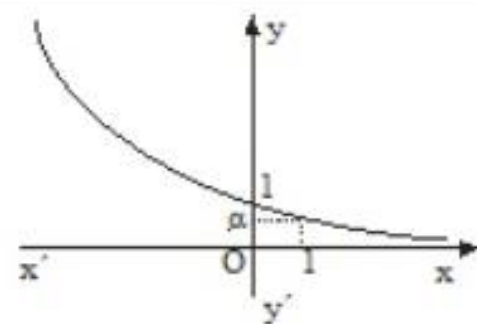


$$f(x) = \epsilon\phi x$$

☛ Εκθετική συνάρτηση $f(x) = a^x$

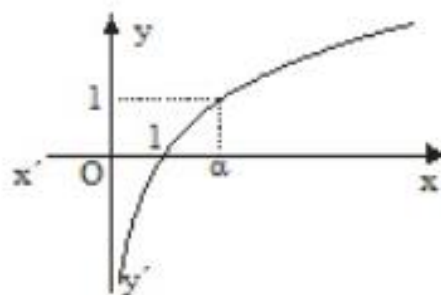


$a > 1$

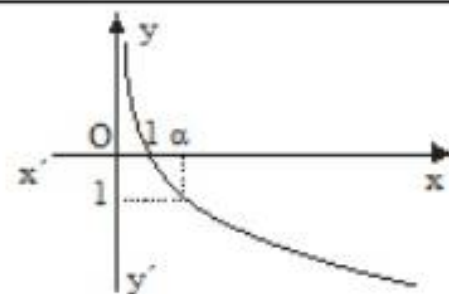


$0 < a < 1$

☛ Λογαριθμική συνάρτηση $f(x) = \log_a x$



$a > 1$



$0 < a < 1$